



WS-MC-20-FMK



877-938-7757

www.wetsounds.com

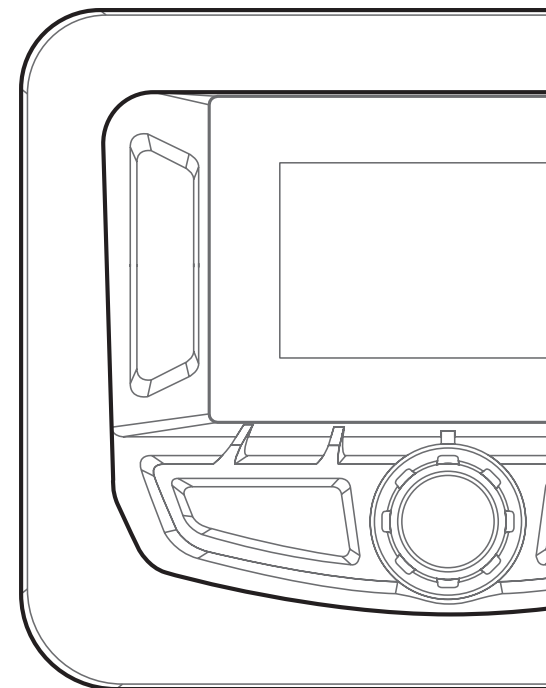
10621 S. Sam Houston PKWY W, Suite 100
Houston, Texas 77071 USA

w e t s o u n d s

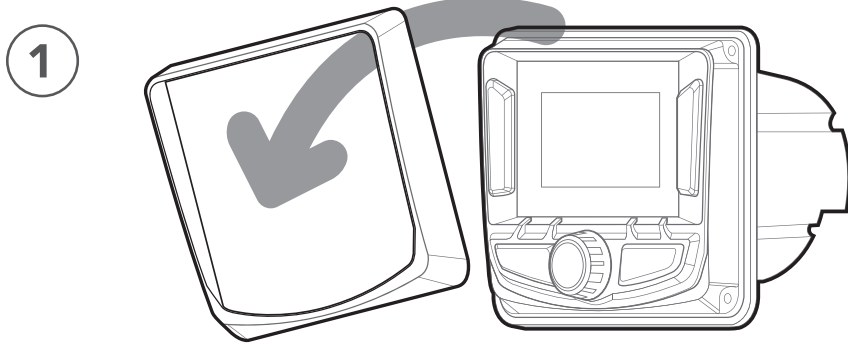
WS-MC-20-FMK

flush mount kit for WS-MC-20

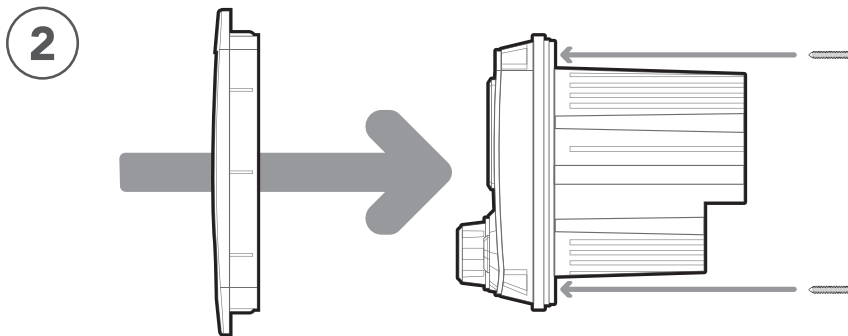
Installation Guide



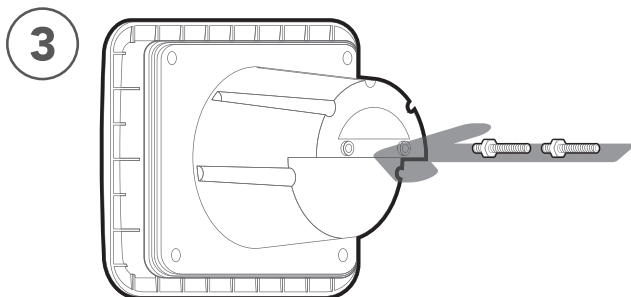
Installation Guide



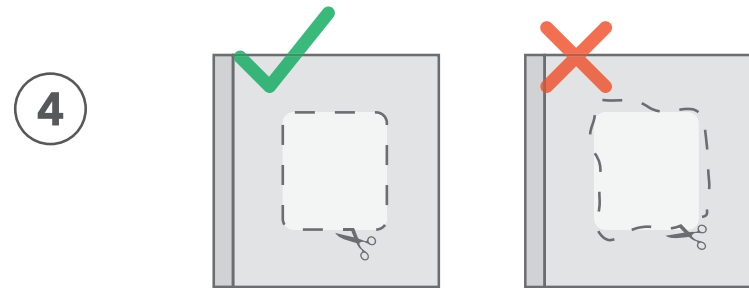
- Remove Surface Mount trim using a soft trim tool to release plastic locking clips.



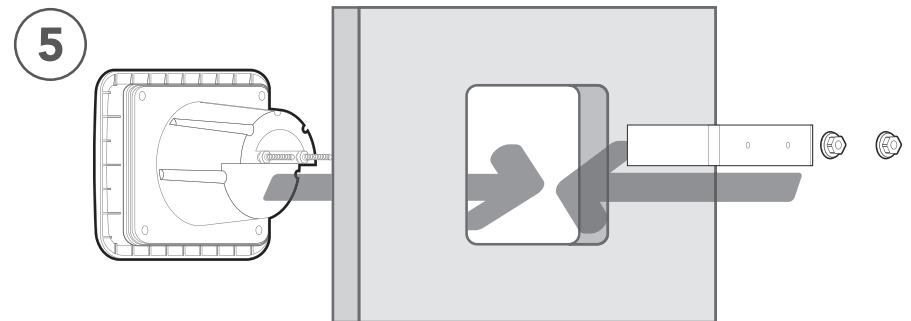
- Attach Flush Mount trim using the (4) screws included in the kit.



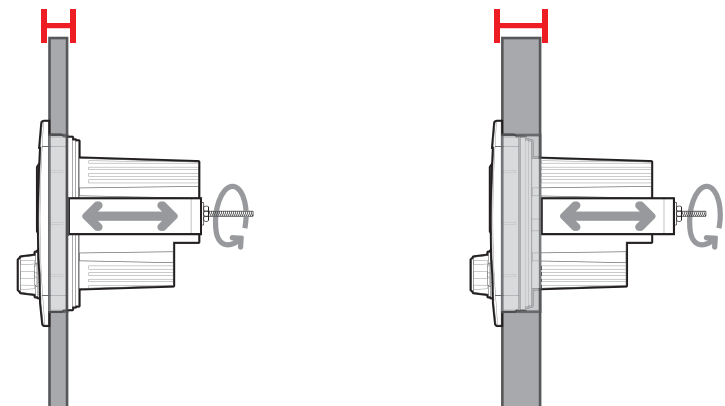
- Attach long mounting screws to the back of the unit.



- Use a template to mark a cut line. Avoid cutting outside the cut line to prevent improper fitment. Recommend taping the surrounding surface to prevent damaging the surface.

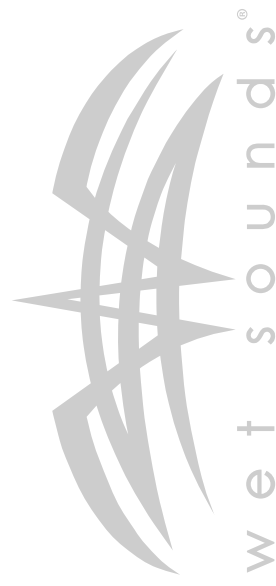


- Place unit into the opening and use the aluminum U-shaped bracket to sandwich the dash between the unit and rear bracket. Tighten the bracket to fit a variety of wall thicknesses.





Cut Line Template



Cut Line Template

